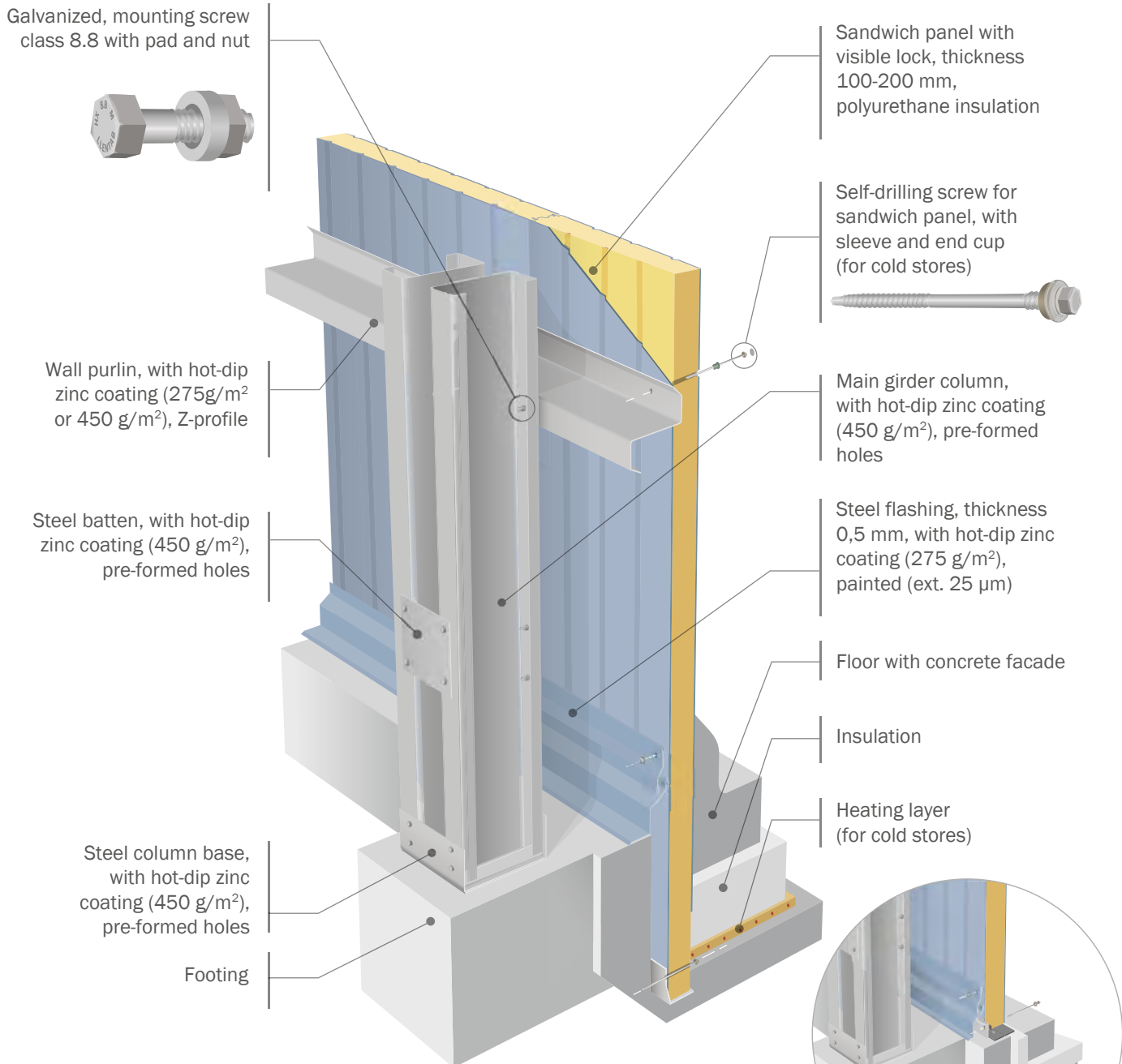
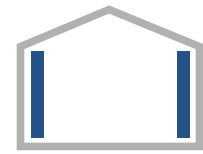
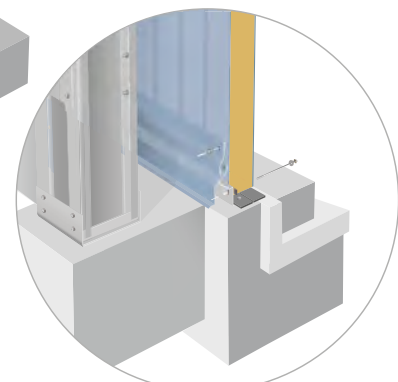


TYPE 6W

Wall insulation Vertical sandwich panel arrangement



Alternative for production halls



Certificate



Thermal transmittance
 U_c [W/m²K]

	-30 °C (frost)	0 °C - 8 °C (cold)	>16 °C (2014) (production)	>16 °C (2017) (production)
U_c required	-	-	0,25	0,23
Insulation thickness (mm)*	160	100	100	100
U_c	0,14	0,22	0,22	0,22
U_o	0,14	0,22	0,22	0,22

* Insulation meets required U_c

